

Satisfied partners

Being in continuous contact with our partners in shipbuilding industry, we know their needs and we are committed to provide them with solutions, even for the most demanding requirements.

Stomana offers flexible delivery times, fast dispatches of urgent inquiries, processing of small orders by trucks up to big projects. Our logistics' performance aims to deliver materials always on time.

Our priorities are:

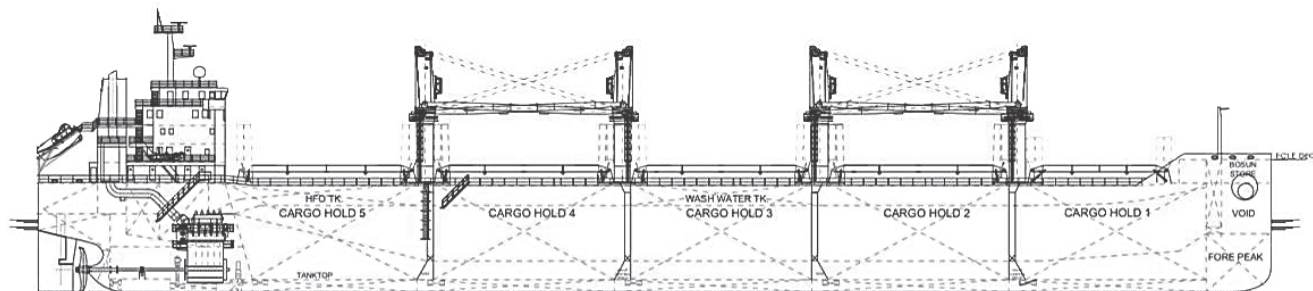
- To provide products of excellent quality in competitive prices
- To sustain competitive advantage by adding value to our offered products and services through optimum customer care and technical support
- To follow the latest developments in shipbuilding industry to obtain cutting edge know-how for new applications and technologies
- To establish long-term relationships with our customers in a mutual quest for quality products and services



STOMANA
INDUSTRY S.A.

SIDENOR GROUP

Shipbuilding the future



Sidenor Group (central offices):

33, Amarooussiou-Halandriou str., GR-15125 Maroussi, Athens, Greece,
Tel: + 30-210-6787 111, Fax: + 30-210-6787 740,
e-mail: info@sidenor.vionet.gr, www.sidenor.gr

Stomana Industry (plant):

1, Vladaisko Vastanie str., BG-2304, Pernik, Bulgaria
Tel: + 359-76-681 013, Fax: + 359-76-681 951,
e-mail: export@stomana.bg, www.stomana.bg

DESIGNED BY
SMART
CREATIVITY



In the heart of shipbuilding

With over 60 years' experience in steelmaking, Stomana heavy steel plates are ideal for hull construction, ensuring high quality during the whole process.

We offer naval steel plates with ordinary and high strength, in standard and cut-to-length dimensions. From grade A to grade DH36 and width up to 2,500mm we cover a wide range of design requirements and vessel types.

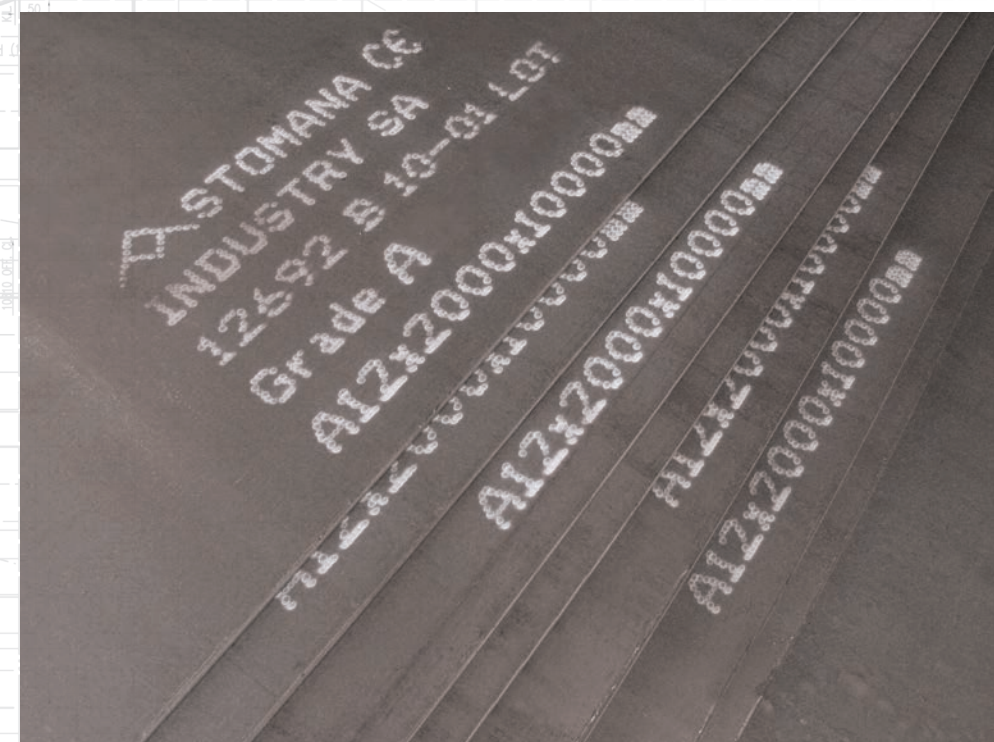


A combination that allows no quality compromises

Processing must be fast and effective,
welding of steel parts must be perfect,
internal flaws that can lead to failures must
be absent.

STOMANA Naval Steel Plates pass strict manufacturing quality control procedures before being challenged in real circumstances. Our plates are suitable for various processing and treatment works, according to their delivery conditions.

Our Naval steel plates fully comply with Safety and Environmental regulations.



The image displays six sample certificates of approval for various materials, arranged horizontally. Each certificate is a formal document with logos, text, and stamps.

- ABS:** The first certificate is for ABS (Acrylonitrile Butadiene Styrene). It features the ABS logo and the text "ABS" in large letters. The certificate is dated 10/10/2010 and includes a signature.
- BV:** The second certificate is for BV (Bureau Veritas). It features the BV logo and the text "BUREAU VERITAS" in large letters. The certificate is dated 10/10/2010 and includes a signature.
- DVN-GL:** The third certificate is for DVN-GL (Det Norske Veritas - Germanischer Lloyd). It features the DVN-GL logo and the text "DVN-GL" in large letters. The certificate is dated 10/10/2010 and includes a signature.
- RINA:** The fourth certificate is for RINA (Registro Italiano Navale). It features the RINA logo and the text "RINA" in large letters. The certificate is dated 10/10/2010 and includes a signature.
- LRS:** The fifth certificate is for LRS (Lloyd's Register). It features the LRS logo and the text "LLOYD'S REGISTER" in large letters. The certificate is dated 10/10/2010 and includes a signature.

Certification in shipbuilding industry is of high importance. Safety and efficiency at every stage of ship manufacturing must be proven.

Stomana shipbuilding steel plates are certified by most of the world's major classification societies including:

American Bureau of Shipping (ABS) - United States
Bureau Veritas (BV) - France
Det Norske Veritas (DNV) - Norway
Germanischer Lloyd (GL) - Germany
Lloyd's Register of Shipping (LRS) - United Kingdom
RINA (RI) - Italy

We can provide other certifications upon request.